

RIKON

10" x 18" MINI LATHE 70-105

Headstock Spindle

1" x 8 TPI Spindle has MT2 taper for pen mandrels



Safety Switch

Safety ON/OFF switch and locking key to prevent unauthorized use



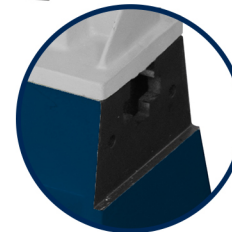
RAM Travel

Easy adjust handle allows up to 1-3/4" of travel



Machined End

Great for adding extensions for turning longer workpieces



- **Motor**
 - Horsepower.....1/2 HP TEFC
 - Amps.....3.7
 - Volts.....120V, 60 Hz
 - RPM.....1,700 RPM
 - Direction.....Forward
- **Speeds**
 - Number of Speeds.....5
 - Ranges.....500, 1,175, 1,850, 2,225, 3,200

- **Swing**
 - Swing Over Bed.....10"
 - Swing Over Tool Rest.....7-1/2"
 - Working Distance Between Centers.....18"
 - Tool Rest Post Diameter.....5/8"
- **Headstock / Tailstock**
 - Spindle Nose Inch x TPI.....1" x 8
 - Headstock Taper.....MT2
 - Tailstock Taper.....MT2
 - Ram Travel.....1-3/4"

- **Overall**
 - Length.....35-1/2"
 - Width.....10-1/2"
 - Height.....14-3/4"
 - Base Size.....29-1/2" x 7-3/8"
 - Net Weight.....75 lbs.
 - Shipping Weight.....80 lbs.
 - Shipping Carton.....32-1/2" x 16-3/4" x 11-7/8"
 - Warranty.....5 Years

For more information or to find a distributor near you, please visit:

www.rikontools.com





70-906

21-1/2" Mini Lathe Bed Extension



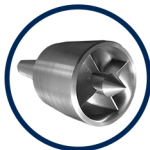
70-920

Universal Midi and Mini Lathe Stand
Adjusts from 23-1/4" to 37-1/4" Long
and 24-1/2" to 34-1/2" Working Height.
Length with Extension Added is 42" to 69-1/2"



70-913

Mini Lathe Stand Extension
The Mini Lathe Extension Works in
Combination with all RIKON Lathe Stands
and Bed Extensions



Badger Spur Center


70-940
4 Sharp Driving Spurs Hold Spindles
Safety Cover Retracts when Mounting Workpiece
Workpiece can be Stopped for Inspection
Spring Loaded Safety Guard and Center Point



Tool Rests

5/8" Post
70-924 - 4" Tool Rest
70-926 - 6" Tool Rest
70-928 - 8" Tool Rest



Spur Centers

70-943 - MT2 3-1/16" Long (Black)



30-991

Drill Chuck and Arbor
5/8" and Arbor MT2



Face Plates & Nylon Washer

70-933 - 3" Face Plate 1" x 8 TPI
70-936 - 6" Face Plate 1" x 8 TPI
70-992 - Nylon Washer (1-3/64" I.D. x 1-5/8" O.D.)



Center Point HSS

70-948 for 70-943 and 70-945 (Black)

For more information or to find a distributor near you, please visit:

www.rikontools.com